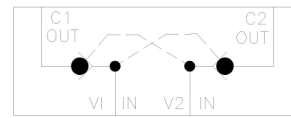
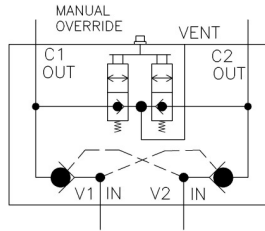
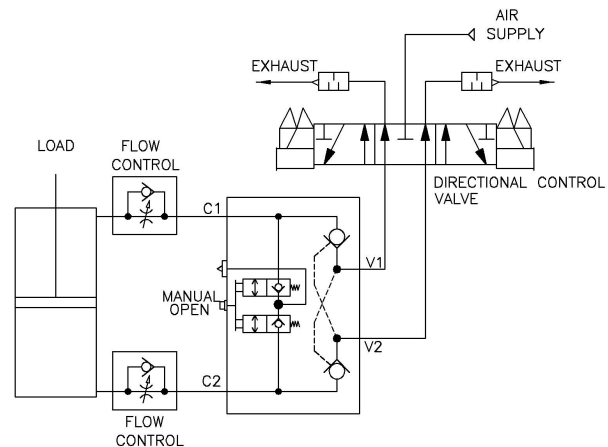


DUAL-CHECK® VALVES

An Aladco® Dual Check® valve is an assembly of two parallel check valves that can be overridden by air piloting (internally plumbed). The Dual-Check® is for pneumatic applications and can be used in either sanitary or harsh/dirty environments.



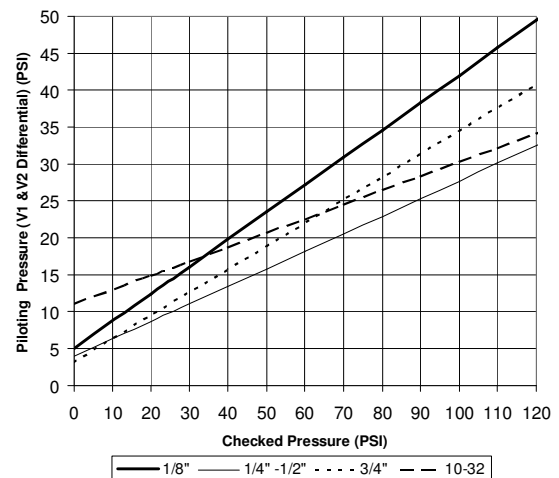
A typical use of a Dual-Check® valve involves combining it with a direction control valve to control air flow from both ports of a double acting cylinder. With an appropriate combination of direction control valves and other pneumatic components, a cylinder position control system using a Dual-Check® can handle both normal position control and standby or safety stop conditions. A combined valve system can have excellent failsafe and assured control properties.



Dual Check® Features

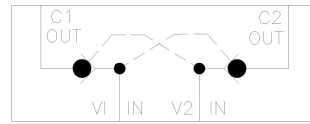
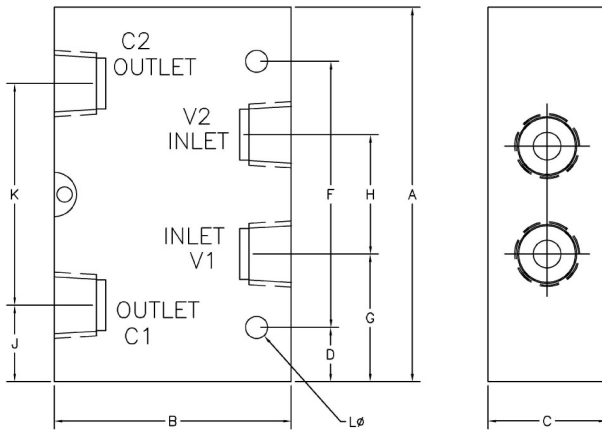
- The rugged valve body is anodized 6061 aluminum. Internal aluminum components are 6061 aluminum.
- Springs are high fatigue resistant nickel coated 302 Stainless Steel. (MTTF is over 100 million cycles).
- Standard seals are BunaN (-30 to 150F temperature range). Viton seals (-15 to 400F temperature range) are an available option.
- Superior, self cleaning ball seal provides long product life. (MTTF is over 100 million cycles).
- Typical operating pressure range is 15-140 PSI.
- The valves are tamper resistant and do not require maintenance. The valves do not require lubricated air, but can be used with lubricated air.

Dual-Check Piloting

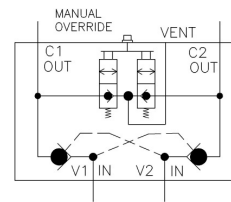


DIMENSION AND SPECIFICATION DATA (A - L dimensions are in inches)

Port Size	A	B	C	D	E	F	G	H	J	K	L	Weight	Cv
10-32	2.5	1.00	0.75	0.25	0.12	2.00	0.85	1.70	0.38	2.10	0.18	0.25 lb	0.2
1/8"	3.38	1.75	1.00	0.69	0.25	2.00	1.17	1.03	0.68	2.02	0.28	0.75 lb	0.8
1/4"	4.75	2.50	1.50	0.69	0.31	3.38	1.62	1.51	0.97	2.81	0.28	1.5 lb	1.7
3/8"	4.75	3.00	1.50	0.69	0.44	3.38	1.62	1.51	0.97	2.81	0.28	2.0 lb	1.7
1/2"	4.75	3.00	1.50	0.69	0.44	3.38	1.62	1.51	0.97	2.81	0.28	2.0 lb	1.7
3/4"	5.10	3.00	1.50	0.60	0.32	4.0	1.71	1.78	0.73	3.73	0.28	2.0 lb	3.2

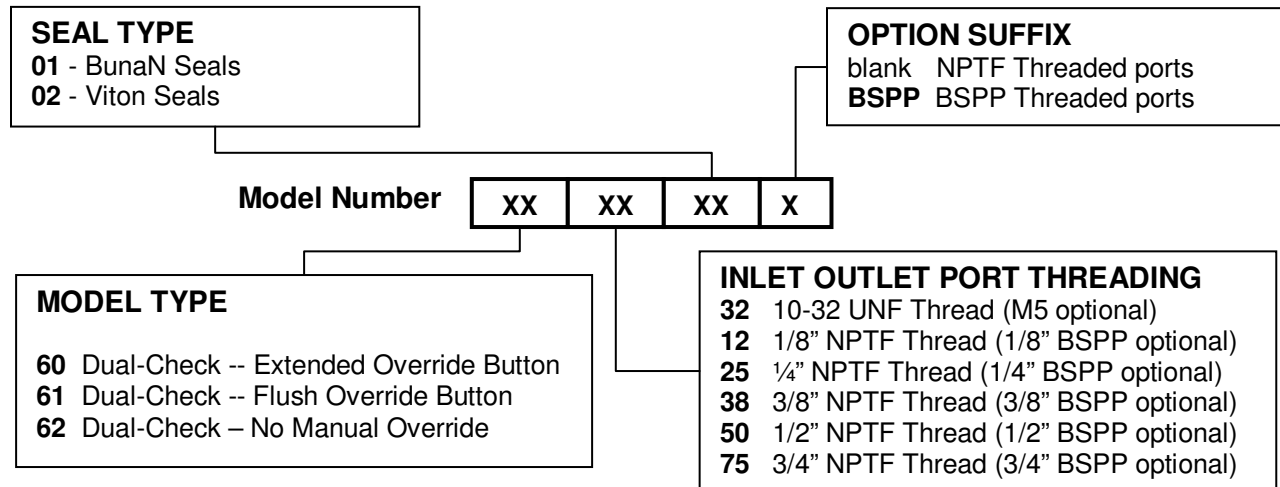


Model Type 62 Schematic



Model Types 60 & 61 Schematic

MODEL ORDERING INFORMATION Valve model numbers are made up of 3 two character fields (6 total characters) with an optional suffix.



Model examples:

Model **603801** is a Dual-Check valve with 3/8" NPTF threaded Inlet/Outlet ports, BunaN seals and an extended override button.

Model **603801BSPP** is a Dual-Check valve with 3/8" BSPP Inlet/Outlet ports, BunaN seals and an extended override button.

